

www.financeshopgroup.com

Finance Shop Wealth Management Quarterly Review



SPRING
2017



Welcome

Welcome to the Spring 2017 Finance Shop Wealth Management (FSWM) Quarterly Review.

The aim of the Review is to give you a general feel for what's happened in the financial world over the last three months and how this may have affected your pension or investment.

A key part of the reporting is the colour coding. Each FSWM portfolio is colour coded to enable you to spot which category applies to you. The relevant information is then presented in a clear and easy to understand way. However, if you require any further clarification, please do not hesitate to get in touch.

The FSWM Team

■ 38-39 Baker Street
Gorleston-on-Sea
Great Yarmouth
Norfolk
NR31 6QT

■ North Wood Place
Octagon Business Park
Little Plumstead
Norwich
NR13 5FH

■ 61 Alexandra Road
Lowestoft
Suffolk
NR32 1PL

01603 595960 www.financeshopgroup.com

*Finance Shop is authorised and regulated by the
Financial Conduct Authority.*



Market Overview – Quarter One 2017

Markets enjoyed a stellar first quarter as a result of continued enthusiasm over the prospects for further stimulus in the US, in the form of tax cuts and infrastructure spending (the so called “Trump trade”), and a general improvement in economic data. Indeed, for the first time since 2011, we have seen the majority of the globe in expansionary territory, and the question now appears to be twofold; are we seeing a sustainable uptick in economic growth, and how much of the potential US policy benefits have already been priced in to the market?

Turning first to growth, there appears to be a general improvement in business and consumer confidence across much of the developed world, with even the majority of the Eurozone joining in.

In the short term rising inflation and political uncertainty may cap upside, however the trend seems to be showing an improving direction. The second factor remains more difficult to predict with the recent failure to push through US healthcare reforms a salutary lesson. Investors thus far appear to be prepared to give the Trump administration the benefit of the doubt, however should talks over tax reforms stall, this may prove to be a bigger fly in the ointment. In Europe the focus of investors will switch to elections as both France and Germany go to the polls, and where much has been made of the so called populist vote and the impact that this could have on the stability of the European Union project. Whilst 2016 proves anything can happen, perhaps concerns are somewhat overdone which gives scope for further gains in Europe.

Key Market Performance - Quarter One 2017



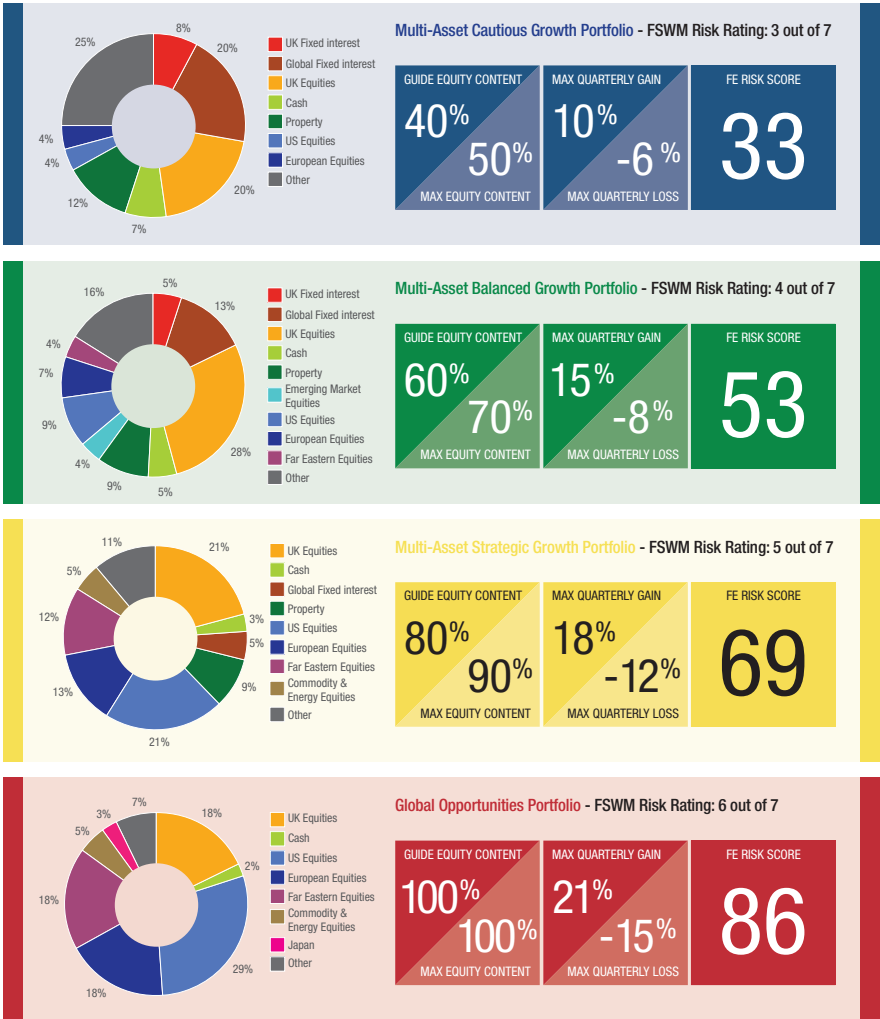
-  IA North America (4.6%)
-  IA UK All Companies (4.5%)
-  IA Europe excluding UK (6.2%)
-  ABI UK Direct Property (2.0%)
-  IA Sterling Strategic Bond (1.9%)
-  IA Asia Pacific excluding Japan (11.5%)
-  IA Global Emerging Markets (11.0%)

FSWM Portfolios – Asset Allocation

There are seven portfolios in the FSWM range, four Growth and three Income which are detailed below. Your FSWM pension or investment will be invested in one of these categories. The tables show the aggregate composition of the portfolios with some figures to show the potential risk and return of each category.

For an explanation of the figures and the sources of the information, please see page 10.

Growth Portfolios

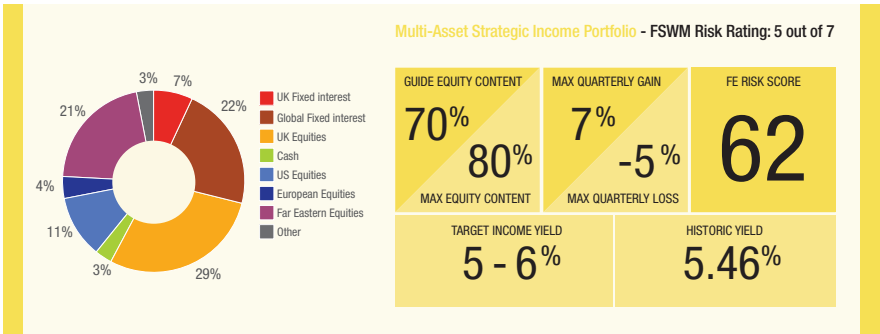
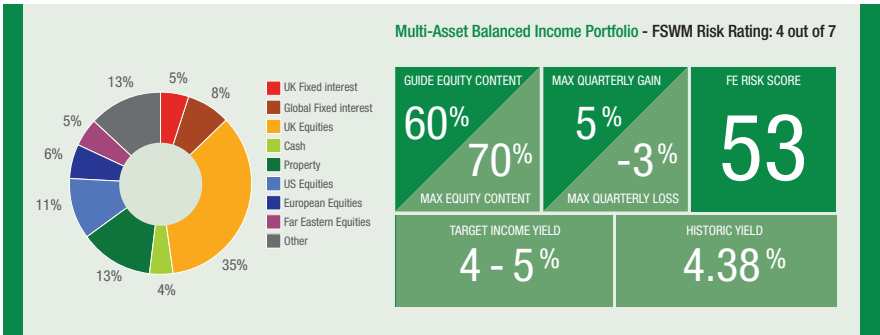
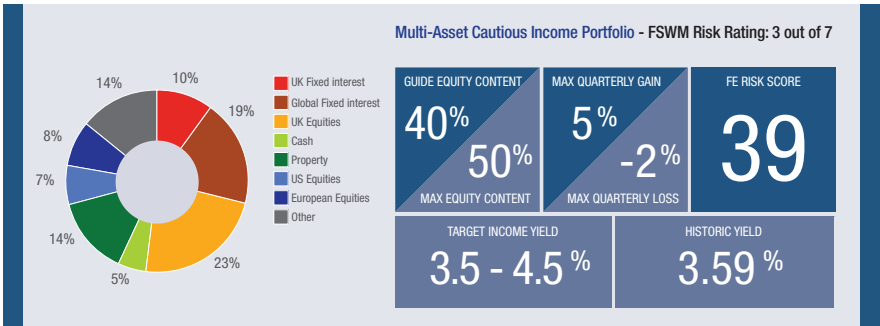


FSWM Portfolios – Asset Allocation

There are three income portfolios which aim to produce an income within a target range as highlighted in the table below. The three portfolios cover the Cautious, Balanced and Adventurous Finance Shop risk categories.

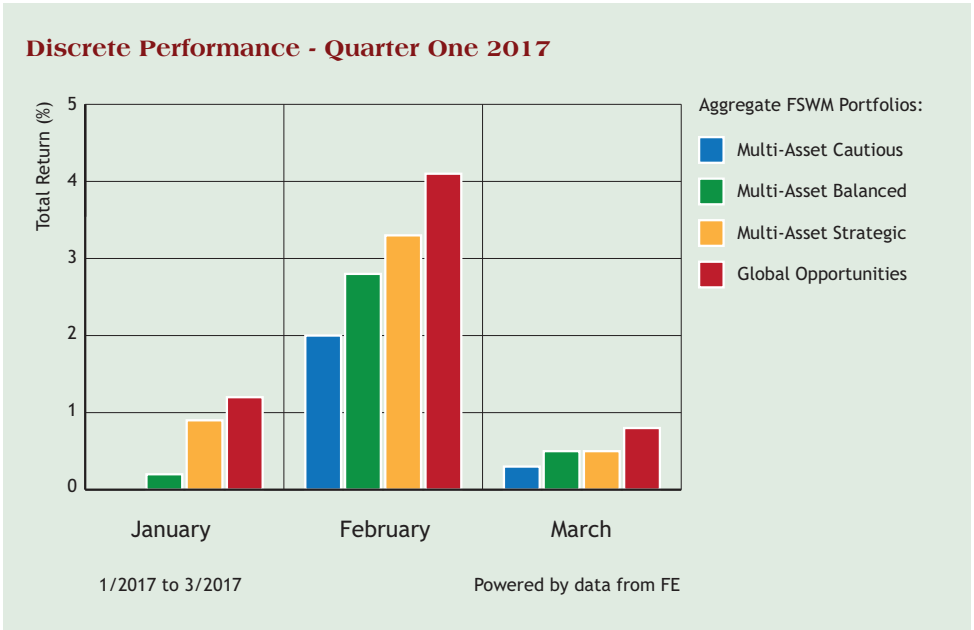
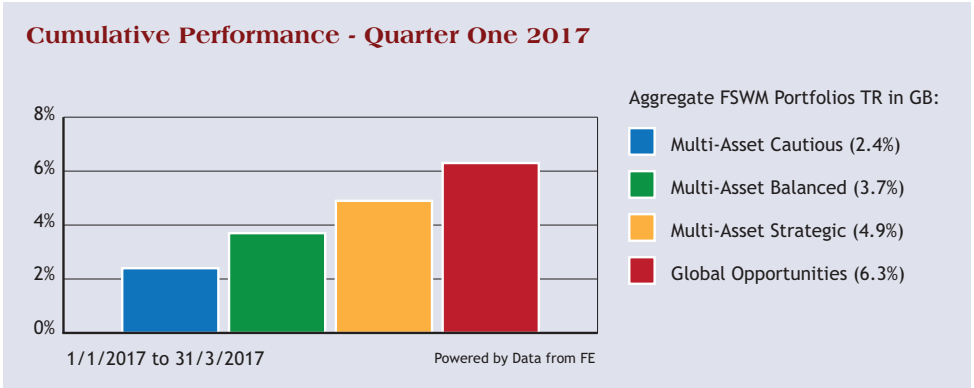
Please see page 10 for further information.

Income Portfolios



FSWM Portfolios – Quarter One 2017 Performance

The graphs below show how the FSWM portfolios within the four Finance Shop risk categories have behaved over the last three months. The first graph shows the total return for the quarter whereas the second graph illustrates the “month by month” performance. The performance figures are aggregated so, for example, the green bar is made up of all the FSWM Multi-Asset Balanced portfolios across all product types. If you require specific performance figures for your plan, please contact your adviser.

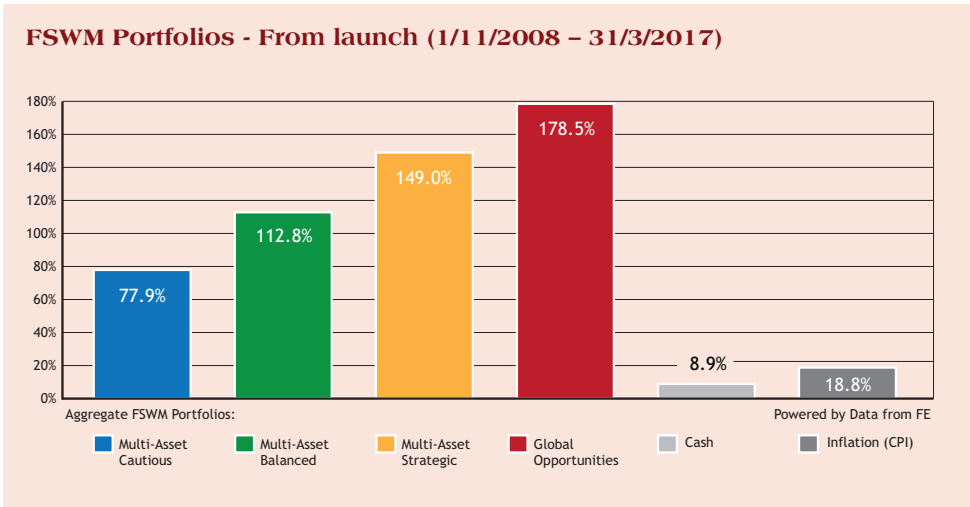
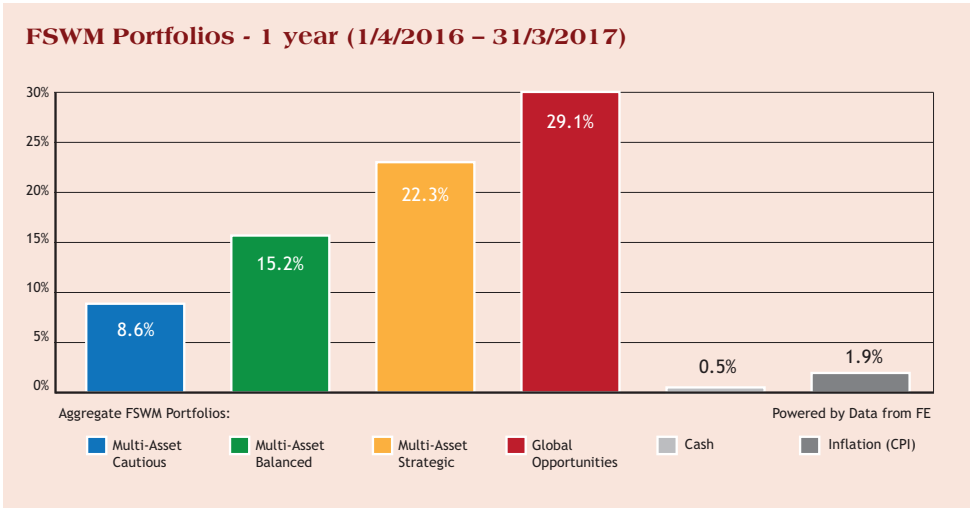


FSWM Portfolios – Longer Term Performance

The first graph below shows how the FSWM portfolios have performed over 12 months. For comparison, the returns of cash (MoneyFacts 90 days notice 10K) and inflation (UK Consumer Price Index) are also shown. As with the graphs on page 6, the figures for each category are aggregated.

The second graph illustrates how the portfolios have performed since launch (1st November 2008).

Please refer to page 10 for further information.



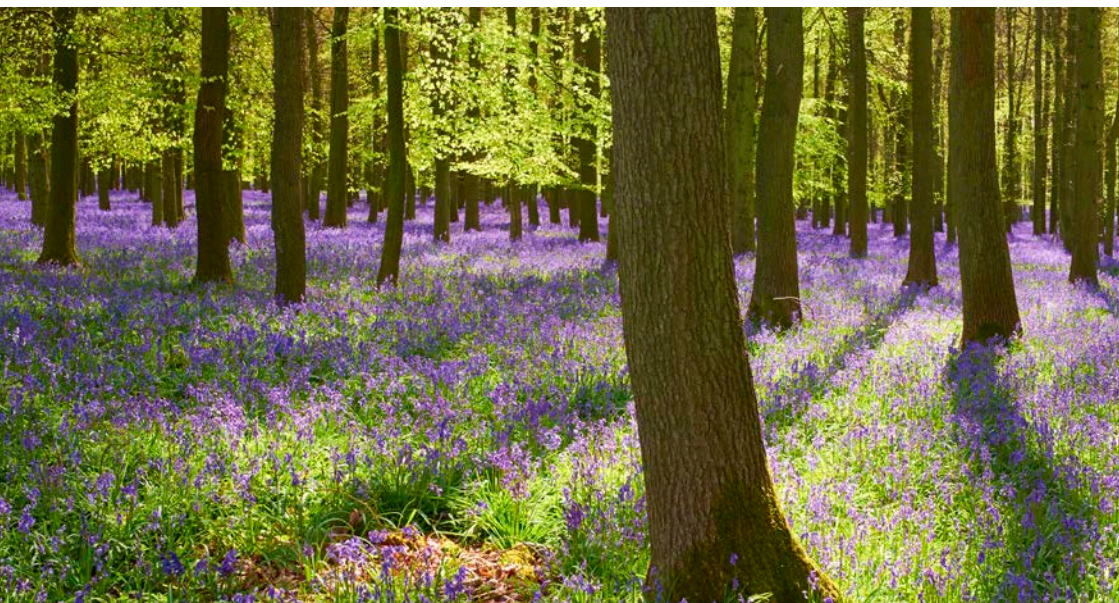
Performance Review

The year has begun with another positive quarter for all the funds, with Very Adventurous leading the way. Emerging Markets in particular produced strong returns as confidence improved and investors sought areas that had underperformed. It is difficult to believe, however, that we will escape without a weaker period, but for now risk appetite appears high.

FSWM Fund Review Policy

A key part of the FSWM service is to monitor the underlying performance of each fund within the portfolios for both risk and return. We have selected quality funds with strong track records and therefore do not envisage a high turnover of holdings. However, there will be occasions when the performance of an individual fund will lead to its expulsion from the portfolio(s). There are a number of factors that determine this decision, for example consistent under-performance, change of management team etc. It is also important, however, to have patience with a fund that is just suffering short-term under-performance.

We operate a “traffic light” system and will move a fund from a “green” to “amber” rating if the fund requires closer scrutiny at the next review. If a fund shows sufficient improvement, it will move back to “green”. If the fund consistently under-performs without good reason its status will change to “red” and the fund will be removed from the portfolio(s). A replacement fund will be selected and all clients holding the fund within their portfolio will be notified. Upon receipt of their authority, the client’s funds will be switched accordingly.



Results of Fund & Asset Allocation Review

The Investment Committee meets on a bi-monthly basis and one of its primary functions is to review our existing fund range. Within this meeting we scrutinise any funds which we feel are performing significantly differently to their peer group or benchmark, with a number then run against our internal performance and risk measurements.

There were a couple of changes to the funds under review, with Neptune European Opportunities and Invesco Perpetual Monthly Income being removed, and Newton Asian Income being added, leaving the following funds under review:

- Henderson Multi-Manager Absolute Return
- Invesco Perpetual Distribution
- M&G Global Dividend
- Henderson Cautious Managed
- Neptune Global
- Invesco Perpetual UK Growth
- Jupiter European
- Miton UK Value Opportunities
- Newton Asian Income



Asset Allocation Table Pages Four and Five – Important Information

The maximum quarterly gain and loss figures in the asset allocation tables on pages 4 & 5 are taken from Financial Express based on the last 32 quarters of the longest running FSWM portfolios (up to February 2017). For the table on page 5, the figures are based on 14 quarters.

FE Risk Score: Financial Express have introduced FE Risk Scores to provide a single, easy to understand measure of risk across a range of investments. In the UK, Risk Scores measure the riskiness of any given investment in relation to the FTSE 100. Weekly volatility is measured over up to 3 years, with recent behaviour counting more heavily than earlier behaviour. The Risk Score is calculated weekly, and can be tracked over time. Cash type investments will have scores near zero, investment funds will tend to have scores in the 0 - 150 range.

The FTSE 100 is always 100. There is no upper limit to the scores.

The asset allocation figures on pages 4 and 5 are aggregated based on the current holdings within the FSWM portfolios for a new investor as at 1st February 2017. They will vary on a daily basis subject to market fluctuations. Rebalancing will be recommended if equity content exceeds the benchmark maximums. There is no guarantee that any of the model portfolios above will achieve their stated objectives. Each model portfolio may also experience more or less volatility than expected. The value of investments will fall as well as rise and are not guaranteed. Past performance is no guide to future performance. The Finance Shop Risk Categories are graded from 1 to 7. The above portfolios cover categories 3 to 6. For further information on all categories, please speak to your Finance Shop Independent Financial Adviser.

Additional Important Information

This report has been issued by the Investment Committee of the Finance Shop Wealth Management team using data provided by Financial Express. Care has been taken to ensure that the information is correct but Financial Express and Finance Shop neither warrants, represents nor guarantees the contents of the information, nor does Financial Express or Finance Shop accept any responsibility for errors, inaccuracies, omissions or any inconsistencies herein.

Past performance is not a guide to future performance. The value of investments and the income from them may go down as well as up and investors may not get back the amount originally invested. Currency fluctuations can also affect fund values. The above report does not constitute advice and you should speak to your Independent Financial Adviser before you make any alterations to investments or pension plans.

The instruments recorded above are weighted model portfolios created using Financial Express Analytics. Performance figures shown are based on the weighted models and may differ from the actual returns achieved by investors. Performance figures shown are based on bid to bid gross returns and do not include plan, contract or ongoing adviser charges / commission. Please refer to your policy documentation for further details.

Financial Express Limited Registration number: 2405213. Registered office: 7 Chertsey Road, Woking, Surrey, GU21 5AB. Telephone 01483 783 900. Website www.financialexpress.net

Finance Shop is a trading name of Finance Shop Limited. Company Number 07535053. Registered in England. Registered Office: North Wood Place, Octagon Business Park, Little Plumstead, Norwich, Norfolk NR13 5FH.

Finance Shop is authorised and regulated by the Financial Conduct Authority.

About Finance Shop

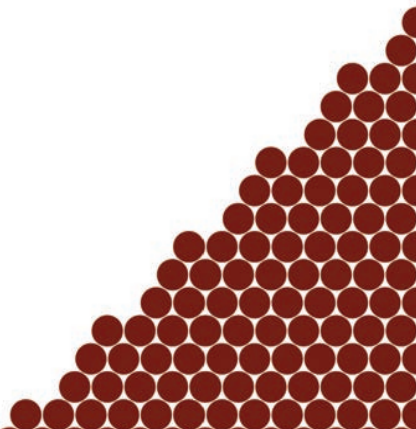
Formed in 1990, Finance Shop has grown to become one of the region's leading firms of Independent Financial Advisers.

As a locally owned, genuinely independent company, we pride ourselves on the quality of our advice and service to both personal and corporate clients. With over 150 years of financial services experience within the firm and over £300 million of assets under management, we have the expertise, experience and knowledge to be able to advise on all aspects of financial planning.

Our belief is that access to quality, independent advice is more important than ever and that is why we spend the majority of our time face to face with new and existing clients, explaining the key issues of today and helping them plan for the future.

Our Services

- Retirement Planning
- Corporate Pension Solutions
- IHT / Estate Planning
- Personal & Business Protection
- Investment Planning
- Mortgages / Equity Release
- Trustee Investment





Finance Shop

Independent Financial Advisers - Finance Shop is authorised and regulated by the Financial Conduct Authority

01603 595960 www.financeshopgroup.com

■ 38-39 Baker Street
Gorleston-on-Sea
Great Yarmouth
Norfolk
NR31 6QT

■ North Wood Place
Octagon Business Park
Little Plumstead
Norwich
NR13 5FH

■ 61 Alexandra Road
Lowestoft
Suffolk
NR32 1PL

